



SKY 1052/1068 DATASHEET

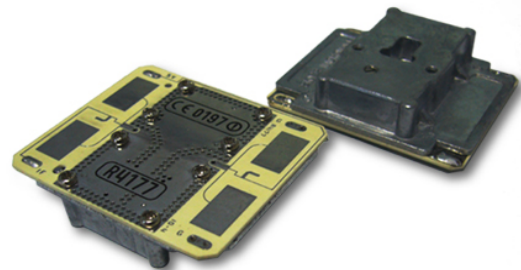
Sky Microwave Co., Ltd

Features:

- Up-to-date sensor with doppler radar technology
- Non-touch module with strong capability against RF interference and wrong alarm.
- Low cost & Low Power Consumption.
- Pin Type & ROHS (Pb Free).\
- Small and Flat Profile.
- Reliable Construction & High Sensitivity.

Application:

- Traffic/highway observation and control
- Security product (sensing device, alarm etc)
- Automobile rear sensing
- Automatic door
- Sensing light
- Possible to apply to all product by working with sensor



Specification:

Electrical Characteristics (at +25°C, +5VDC)

1. Operating Voltage: 5.0±0.2 Vdc
2. Operating Current: 30 mA typ.
3. Center Frequency : 10.525 GHz / 10.687 GHz
4. Frequency Stability: ±5 MHz max. (-30 to +55°C)
5. Output Power: 100mW
6. Return Loss Sensitivity: -90dBc typ.
7. Second Harmonic Emission: 1μW max.
8. Antenna Beam width (-3dB): E-Plane: 36 deg. nom. H-Plane: 72 deg. Nom.
9. Dimension: 46mm*40mm*12mm

Pulse Mode Operation

1. Pulse Width: 20μsec
2. Duty Cycle: 0.02

Absolute Maximum Ratings

1. DC Input Voltage: +6 Vdc
2. Operating Temperature Range: -30 to +55°C
3. Storage Temperature Rang: -40 to +80°C
4. Relative Humidity: 95 % at 35°C
5. Vibration: G=10 (f=30,50 Hz, t=10min., Direction; X, Y, Z)
6. Shock G=20 (Half Sine, 10msec., Direction; X, Y, Z)

Important note: We are original manufacturer in this microwave sensor module!

Package Size and Weight:

Carton size: 36x 39 x66cm /Quantity: 1000pcs/Carton/ N.W:16kgs/CN/ G.W.:18kgs/CN