

Fixed Cellular Terminal

FCT-11M

USER MANUAL

INDEX

1.	Instruction.....	2
1.1	Safely instruction.....	2
1.2	Warning	3
1.3	Confidentiality Statement.....	4
2.	Packing List.....	5
3.	Main function	5
4.	Application	6
5.	Parameter.....	6
6.	Power Specification.....	7
7.	Antenna information.....	8
8.	The Figure Of The Termianl.....	8
9.	Installation.....	10
10.	Operation Instruction.....	11
11.	Attention.....	13
12.	Epidemic Failure	13
13.	Maintain Your Terminal.....	15

1. Instruction

This terminal is independently designed and manufactured with the advanced GSM wireless technology in the world. It is convenient to be connected with various systematic mobile telecommunication networks at present. This system has a high sensitivity of receiving signals and large transmitting power, which greatly expands the effective coverage of GSM cellular network. It also features in shaking-resistance, moisture proof, voltage fluctuating bearing. It is widely used in mobile communications, intercommunications and inner communications to realize the good utility of resources. Furthermore, it provides conveniences and safety for enterprises in wireless and remote uses. It is safe and reliable because of no radiations in the terminal.

1.1 Safely instruction

- & This Section provides various safety guidelines. Read this information before using your terminal (called terminal throughout this guide). Failure to comply with these guidelines could prove either dangerous or illegal
- & Clean with the wet or anti-static cloth, do not use the dry cloth or static cloth. Don't use chemical product to clean the surface of your terminal. Shutdown your terminal when cleaning.
- & Do not expose to strong direct sunlight.
- & Avoid any liquid substances entry the inside of your terminal.

- & Avoid dropping and other rough treatment to the terminal.
- & Only connect your terminal with the concurrent device.
- & Only use the power adapter specify by the manufacturer. Use other adapters or batteries may bring in danger. Never use any chargers or batteries which are damaged.
- & Do not use the non-chargeable batteries, or them may explode; please let the batteries charged for 12 hours or more before its first use.
- & Don't use this terminal near the gas station, oil depot, chemical storage, medical equipment, or dangerous substances and the area that indicated something like 'switch off the any cordless radio equipment'. Observe restrictions and follow any regulations or rules that are in force.
- & This terminal is an indoor terminal, don't use it out doors, and pause using it when lightning storm.
- & This cordless phone maybe affects the state of other electronic equipment, for example, the TV, radio, and so on. Please keep away from these equipments when using it. To make the quality best, place this terminal away from metal goods and don't use the same electrical outlet with these electrical appliances which have the electromagnet interference.

1.2 Warning

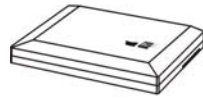
We will never fix a terminal which has been opened by user for free. And its warranty period will also be terminated.

1.3 Confidentiality Statement

The recipient of this document hereby agrees that all the information that this document contains is confidential and property of the supplier and will not be disclosed to any individual or entity without prior written consent. The information, ideas and strategy disclosed in this document shall remain the property of the supplier and should not be reproduced and shall be returned to the supplier promptly at its request together with all copies made thereof. Recipient acknowledges that no remedy of law may be adequate to compensate the supplier for a violation of this Agreement and Recipient hereby agrees that in addition to any legal or other rights that may be available in the event of a breach hereunder, the supplier may seek equitable relief to enforce this agreement in any Court of competent jurisdiction.

2. Packing List

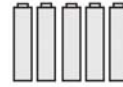
Check all the components according to the packing list when you open the package. Please contact with the dealer or seller in time when you find some missing or destroyed.



1. Terminal



2. Adapter



3. Batteries



4. Antenna



5. User Manual



6. Rj11 Wire(optional)

3. Main function

- & Perfect voice quality, Strong capacity of resisting disturbance, Good appearance, convenient to install or operate
- & High sensitive of receiving and sending, and strong sending power
- & Emulate switching equipment function, provide

- dialing tone, FSK dialing, Ring stream signal
- & Precision reversal polarity signal, time metering function
- & Phone/SIM card locking function
- & Support Office PBX
- & Backup power system

4. Application

1. Wireless public terminal
2. Wireless terminal for company(support PABX & VOIP)
3. Convenient switch-in for home usage
4. Mobile communication(Ship/Train or any other moving facility)

5. Parameter

Descriptions		Unit	Specifications
Working Frequency	UP	MHz	890~915 1710~1785 1850~1910
	DOWN	MHz	935~960 1805~1850 1930~1990
Transmitting		W	<2W
Receiving		dBm	-103
Gain		dBm	2
Atmosphere		Kpa	86~106
Ambience Temp			0℃ ~55℃
Relative Humidity			10%~95%

Environmental	dB	≤60dB (A)
Frequency Stability		Better than 2.5PPM
Maximum Distance Between Phone and Terminal		≤100m

6. Power Specification

Power Mode	AC to DC
Switch adaptor	110-240V, DC7.5V, 1.5A
Switch adaptor	110-240V, DC12V, 1.0A

Backup Batteries Mode	
NiH AA 1100mAh 1.2V (5 pieces)	
Standby: 7Hrs(Approx.)	Continued Talking: 2Hrs(Approx.)

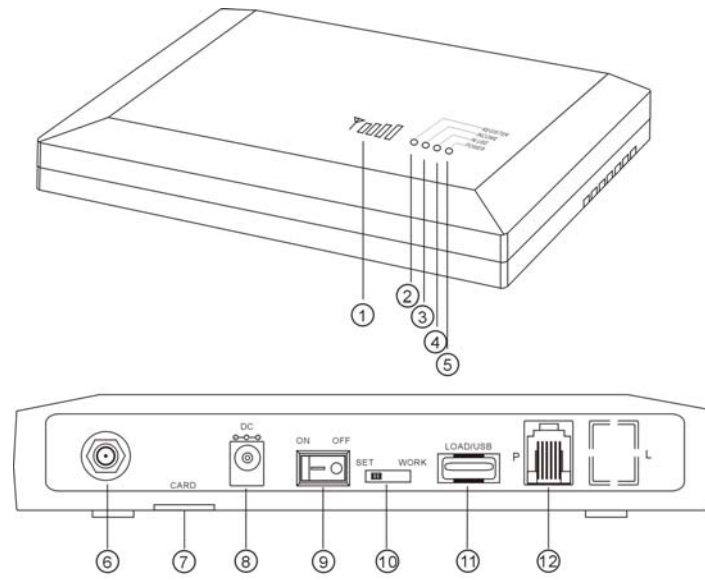
Note:

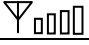
- a. The battery will give the power when the normal power is off, and the battery power will be off when the normal power is On.
- b. The battery is for backup power only. It is not designed for normal power use.

7. Antenna information

Frequency range	A:890-960MHz B:1710-1850MHz C:1850-1990MHz
Gain	2.5dB or 5.5dB (optional)
Connector Type	SMA/FME
Length	3m , 5m (optional)
Weight	120g

8. The Figure Of The Terminal

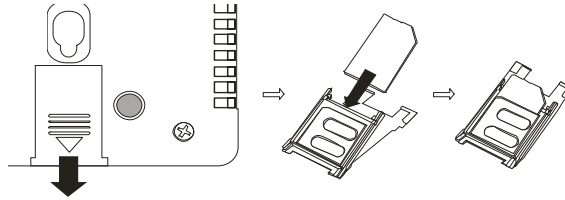


Series Number	Key	Function
1		Strength of the Signal
2	Register	If the network is successfully registered, this light flashes.
3	Income	In standby mode, this light doesn't light, if there is an incoming call, the light is on.
4	In use	In standby mode, this light doesn't light. When the terminal is in use, the light is on.
5	Power	It is ON when it is powered.
6	Antenna Port	For plugging in the antenna
7	SIM Card Slot	For inserting the SIM card
8	Power Plug	For plugging the power adapter
9	Power Switch	Switch to ON side, the terminal power on. Switch to Off side, the terminal power off
10	Setting Switch	Switch to SET side, the terminal is standby for setting. Switch to WORK side, the terminal is standby for normal using
11	USB/RS232	For plugging the data cable

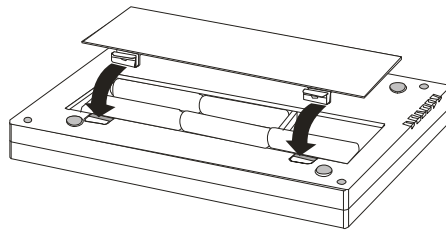
	Port	
12	RJ11 Port	For connecting the normal phone

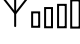
9. Installation

1. Take off the cover of the SIM holder, then insert a SIM card into the holder as below, then re-cover the holder.



2. Install the antenna
3. Plug in a phone(or a meter equipment) into RJ11 Port through a RJ-11 wire
4. Plug in the DC port of the adapter into the Power port, the input side of the adapter should be plugged into the AC socket.
5. Input the batteries as below, please be careful about the '+' '-' ports. All the ports should be matched as the sign.



6. All connections done, then switch the power to ON side. After the power is on 15 to 45 seconds, Register light should be on, network will be registered successfully. The  shows the strength of the signal. Then the terminal is standby to use.

Warning: 1. Please ensure the power switch is in 'OFF' side before installing the terminal.

2. When you assembling the antenna, insert it into the antenna port in the terminal, circumrotate to the best location. Then screw the antenna tightly. To ensure the voice quality, the antenna should 1.5m or more than 1.5m far away from the terminal.

Important Warning: If you use the antenna three or six meters long, forbid taking it to the outdoors lest the lightning strike. Do Use the lightning defense equipment between the antenna shelves with the down-lead if you use the antenna ten meters long. Installing outdoor antenna and lightning defense device: all figures just as a reference way.

10. Operation Instruction

1. Make outgoing calls

- a. **Make a call:** Pick up the hand set or press 'Handsfree' key,

the 'In Use' light on. You could make a call while hearing a dial tone. Then you can dial the number you want. Meantime, if the terminal is connected with a meter equipment, the equipment will show the dialed number and start the metering when the receiver answers the phone.

- b. **Quick dialing:** When you input the number you want to dial, follow a '#' key, then the call will be get through directly. If don't input '#' key, the call will be get through after 5 seconds.
- c. **Forbidden call:** If the number you dial is forbidden, the terminal won't put the call through. At the same time, the terminal will beep up " du-du-du "sound to indicate that you hang up the phone.

2. Receive incoming calls

Receive call: When there is an incoming call, the phone will ring. INCOME light is on. You pick up the handset or press the 'Handsfree' to receive the incoming call. If the terminal is not limited tariffs for incoming calls, it will start metering as soon as you pick up the receiver.

3. Adjust volume

Pick up the receiver or press 'Handsfree' key, press #X# for different volume levels on the keyboard.

Note: X = 1--5. 1 is the minimum volume and 5 is the

maximum volume.

11. Attention

1. **Signal Shield:** Before using the terminal, please confirm there isn't any restriction for wireless signal in the area.
2. **Interference:** Same as all wireless equipments, the terminal maybe interfered, the voice quantity maybe infected.
3. **Exclusion Area:** Don't use the terminal at the place where marked 'Turn off wireless equipments' or any potential blast area.
4. **Accessories:** Just use the accessories coming with the terminal, such as Antenna, Adapter and the batteries. Please be careful the usage of the batteries.
5. **Settings:** Before using the terminal, the terminal should be initialized by the dealer or the network operator. Don't change the settings optional.
6. **Usage:** Don't operate other ports(Setting port & Download port), except Power Switch.

12. Epidemic Failure

Failure	Solution
Can't Register	1. Check if the SIM card is placed well. 2. Check if the SIM Card is locked. You can check

	it by using mobile phone.
No Signal	If the strength of the signal is low or the gain of the antenna is low, check if the antenna is connected well
Power Light Doesn't On	<ol style="list-style-type: none"> 1. Check if the adapter is connected well with the AC socket. Check if the Plug-in is connected well with the terminal 2. The adapter is broken
Bad voice quality	<ol style="list-style-type: none"> 7. Change a phone 8. The terminal should be far away from the antenna 9. Put the antenna in the area where it can receive signal well
No Ring	<ol style="list-style-type: none"> 1. The phone is broken 2. The terminal is broken. In this case, you may contact your after-sales services
Can't Dial	<ol style="list-style-type: none"> 1. Network problem, can't register the network well 2. Check if the forbidden number has been set. Please contact your local retailer. 3. Terminal failures. Please contact after- sales services
Can't Meter Tariffs	<ol style="list-style-type: none"> 1. Check it to see whether the metering machine is well connected with the terminal. Fasten the RJ-11 port if necessary.

	2. Check the metering machine to see whether it works well
--	--

13. Maintain Your Terminal

- & Keep it dry. Humidity and liquids contain mineral that will corrode electronic circuits.
- & Keep it in room temperature. High temperatures can shorten the life of electronic devices, damage batteries, and make certain plastics warp or melt.
- & Do not drop, knock or shake it. Rough handling would break internal circuit boards.
- & Do not use or store it in dusty, dirty areas. Its moving parts can be damaged.
- & Do not use chemicals material to clean it. Wipe it with a dampened cloth slightly.